

you can  
**Canon**

**DR-5060F**  
hybrid system  
document scanner

*Profit from highly productive  
document scanning and microfilming*





### *High performance, hybrid scanning solution*

The DR-5060F sets the standard for high performance hybrid scanning, based on Canon's proven experience in digital imaging and micrographic technology. Allowing instant access to digitally scanned documents while also providing secure microfilm back up for long-term storage. To ensure maximum efficiency combined with an optimal price/performance ratio.



### INSTANTANEOUS DIGITAL ACCESSIBILITY

With its highly productive electronic scanning capabilities, the DR-5060F makes a wide variety of documents available for immediate processing. Thus allowing users to instantly access, share and exchange information across networks. The system supports an extensive range of document management software, ensuring fast storage, indexing and retrieval of processed data.

### LONG-TERM MICROFILM ARCHIVING

This hybrid system also offers high image quality microfilming, superior to existing standards. As a result, organizations can rely on secure and long-term retention of documents - without the risk of changing digital formats or data deterioration. Furthermore, the legal status of microfilm images is well established for both record-keeping requirements and admissibility in evidence.

### SIMULTANEOUS SCANNING AND MICROFILMING

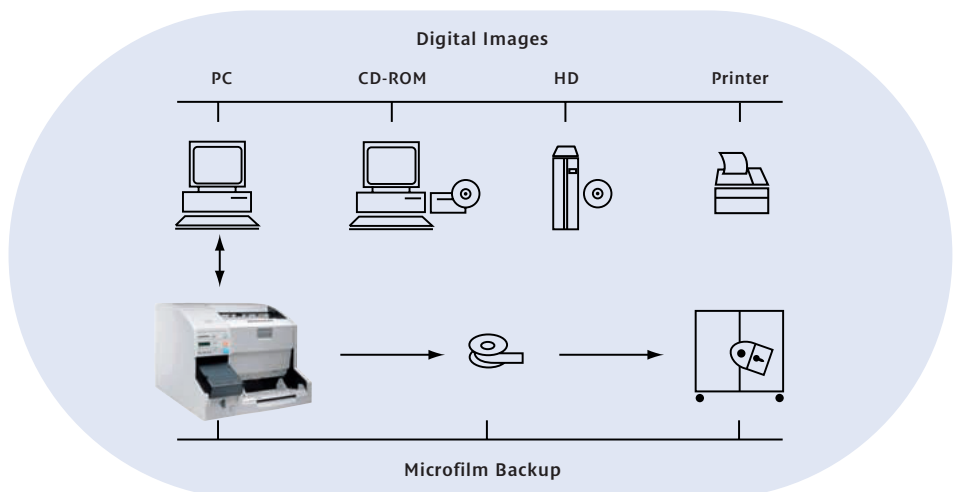
To save time, increase efficiency and reduce overall paper handling, the DR-5060F captures documents for both scanning and microfilming in a single run. It is capable of handling simplex and duplex documents, providing maximum productivity. Of course, scanning or microfilming can also be set separately.

### AUTOMATIC LOG FILE CREATION

The bundled drivers automatically create a log file for microfilmed images, corresponding to the blip marks (stripes) on the film. You can then add further index information using the supplied software, thus enabling fast and easy retrieval of all relevant filmed images. The log file is completely independent of the application software, allowing the two sources - microfilmed and scanned images - to be managed separately, for far greater flexibility.

### HIGH SPEED, HIGH QUALITY SCANNING

The DR-5060F combines fast document throughput with excellent image quality, to meet all your heavy-duty scanning needs. A superior scanning speed, reaching right up to 84 ppm (A4 simplex, 200 x 100 dpi) provides professional and productive processing. With automatic duplex scanning doubling overall productivity.



## PRODUCTIVE PAPER HANDLING UP TO A3

The system accepts a wide range of paper formats, from small cheques up to large A3 sizes, providing unlimited document processing. It is capable of handling mixed batches as well as different paper thicknesses. A standard automatic feeder for up to 500 sheets, with highly precise skew correction and double feed detection, ensures a smooth paper flow.

## EASY AND HIGHLY RELIABLE OPERATION

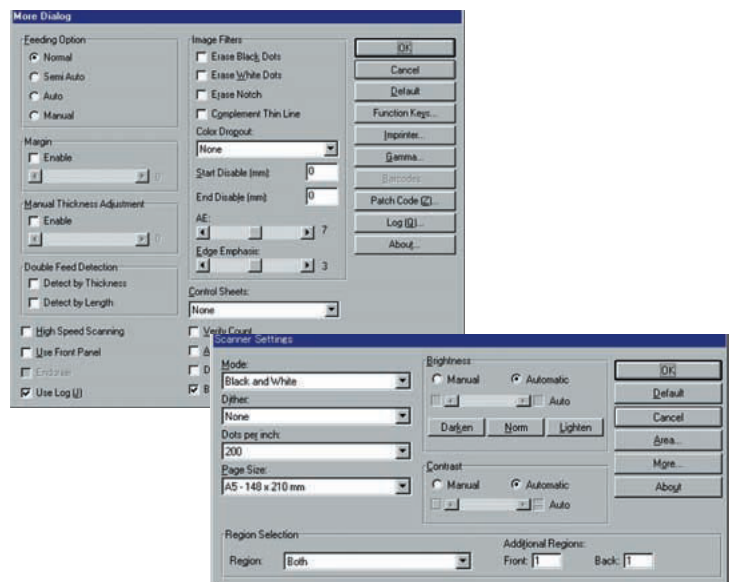
A clear control panel enables easy and efficient operation for both scanning and microfilming. An optional patch code detector simplifies batch scanning by automatically separating files in mid scan. Built-in image enhancement improves image quality. And the system is capable of handling up to 6 million scans, to ensure long-term durability.

## IDEAL FOR EXTENSIVE APPLICATIONS

Standard ISIS™, TWAIN and Scanning Utility 5060 with Canon Driver support virtually all readily available software packages, making the system ideal for use in a wide range of industries and government organizations. Or you can develop customized application software, using the Canon driver. Plus, as both active and archiving applications are supported, you benefit from a perfect price/performance ratio.

## FULL RANGE OF PRACTICAL ACCESSORIES

Advantageous accessories include state-of-the-art camera units (24x or 57x), an ED600 endorser, a barcode decoder for automatic image indexing and an imprinter to facilitate document tracking and control. A patch code detector is available for automatic file separation by detecting patch codes printed on documents. The DR-5060F: the one system designed to meet all your needs.



## DR-5060F HYBRID SYSTEM

### DOCUMENT SCANNER

- Fast, high quality image scanning  
(84 ppm, A4 simplex, 200 x 100 dpi)
- Secure 16 mm microfilm back up
- Scan and film simultaneously or select scan or film mode separately
- Accepts documents up to A3 in both simplex and duplex mode
- 2/4/8-bit grey scale support
- Durability of up to 6 million scans
- Fast SCSI-2 interface
- Standard ISIS™, TWAIN and Scanning Utility 5060 with Canon Driver to support extensive applications
- Productive options include camera units (24x or 57x), endorser ED600, barcode decoder, imprinter and patch code detector



## DR-5060F Specifications

<b>Type:</b>	Sheetfed scanner with microfilming back up
<b>Document size:</b>	Width: 55-297 mm, length: 70-432 mm (-891mm through service mode)
<b>Durability:</b>	6 million scans (requiring periodical parts replacement)
<b>Dimensions (WxDxH):</b>	535 x 671 x 447 mm (Tray closed)
<b>Weight:</b>	48 kgs (main body plus one camera unit)
<b>Options:</b>	Camera unit 24x or 57x, endorser ED600, barcode decoder, imprinter, patch code detector

### Scanner specifications

<b>Sensor:</b>	Contact sensor (CMOS CIS) optical resolution 300 dpi
<b>Light source:</b>	RG 1 line LED array
<b>Scanning side:</b>	Simplex or duplex
<b>Output image data:</b>	Binary/error diffusion, 2/4/8-bit grey scale, 300 x 300, 200 x 200, 300 x 150, 240 x 240, 200 x 100 dpi

<b>Scanning speed:</b>	A4 portrait 84 ppm in 200 x 100 dpi 62 ppm in 300 x 150 dpi 49 ppm in 200 x 200 dpi
<b>Compression:</b>	Available through driver/application (MH/MR/MMR/JBIG)
<b>Driver &amp; utility:</b>	ISIS, Twain, Scanning Utility 5060 with Canon Driver
<b>Output interface:</b>	SCSI-2

### Filmer specifications

<b>Film:</b>	16 mm-100/125/215 feet standard microfilm.
<b>Filming mode:</b>	Simplex/duplex
<b>Reduction ratio:</b>	24x (simplex) or 57x (duplex)
<b>Blip mark:</b>	2 level (file/page)



you can  
**Canon**

**Canon Electronics Inc.**  
1248, Shimokagemori, Chichibu-shi, Saitama  
369-1892, Japan  
[www.canon-elec.co.jp](http://www.canon-elec.co.jp)

Europe, Africa and Middle East  
**Canon Europa N.V.**  
P.O. Box 2262, 1180 EG Amstelveen,  
the Netherlands  
[www.canon-europa.com](http://www.canon-europa.com)

English Edition 0033W212  
© Canon Europa N.V., 2002 (1002)



DR-5060F

™ All company and/or product names are trademarks and/or registered trademarks of their respective manufacturers in their markets and/or countries. Canon reserves the right to change specifications without notice.